

MULAG

Innovative Technologies for Roadside Maintenance



Product range

Mowing

Municipal Tractors

Reflexion post mowers

MLM 200



Technical data

Reach	up to 2.5 m
Control	electro-hydraulic
Drive	integrated into the hydraulic system of the verge mower
Special features	Automatic touch control system to adapt to the terrain contour Continuous distance control to the guard rail

Description

The Reflexion Post Mower MLM 200 works around the guard rails, posts and traffic signs. In combination with the verge mower MRM 300 it offers a very effective and economic solution.



MLM 200 transport

Verge mowers

MRS 300



Technical data

Reach	up to 3 m right-/left-hand side
Drive	Front PTO-shaft (opt. rear PTO-shaft with rear-mounted hydr.)
Special features	Electro-hydraulic control with mowing head relief system Road speed-related automatic obstacle detector Automatic parking system

Description

The verge mower is perfect for close to roadside mowing work, either right-hand or left-hand operation. Due to its low height, this mower is suitable for use underneath crash-barriers.



MRS 300 transport

Front-mounted mowing equipment

MFK 500



Technische Daten

Reach	up to 6 m right-/left-hand side (with telescope up to 7 m)
Lateral shift	1800 mm
Special features	Transport position in front of the vehicle (equipment width in transport position 2.4 m) Universal use by quick-change-device

Description

Thanks to its lateral shift and its geometry the MFK 500 is suitable for mowing and working close to the roadside as well as behind crash-barriers. An optional telescopic arm increases its reach, e.g. for hedge cutting.



MFK 500 telesc. transport

Mowing combinations

MKF 600



Technical data

Reach	Front mounted mower 5.5 m (6.0m*) Verge mower 3.0 m
Lateral shift	Hydraulic, 1,300 mm (1,800 mm*) Verge mower up to 1,000 mm
Special features	Transport width 2.5 m CAN-Bus control / Mähtronic Verge mower automatic touch control system and CAN-BUS

Description

The independent lateral shift of power arm and verge mower increases the working performance considerably, in particular when working in alleys and under crash-barriers. The MKF 600 has a compact transport position.



MKF 600 transport

* after dismantling of the verge mower

MKF 600 Teleskop



Technical data

Reach	Front mounted mower 6.5m (7.0m*) Verge mower 3.00 m
Lateral shift	Hydraulic, 1,300 mm (1,800 mm*) Verge mower up to 1,000 mm
Special features	Transport width 2.5 m CAN-Bus control / Mähtronic Verge mower automatic touch control system and CAN-BUS

Description

With its telescopic arm the MKF 600 offers a very big reach and can be used very effectively for mowing big slopes and cutting hedges.



MKF 600 telesk. transport

* after dismantling of the verge mower

Central-mounted mowing equipment

GZA 750 S



Technical data

Mounting	centre position
Swivel range	200° (95° rear/105° front)
Reach	7,30 m (telescope 8,30 m) right-hand working position
Transport position	over fender to the rear

Description

Working in the immediate proximity of obstacles is now possible with the integrated swivel arm. Transport position to the rear allows advanced driver's view on the street while driving.



GZA 750S telesc. transport

professional roadside care.

Mowing combinations

FME 500



Technische Daten

Reach up to 6.5 m right-/left-hand side

Special features Transport position above vehicle cab
Low front axle load in transport position
Implement width in transport position only 1.50 m

Description

The FME 500 with its reach up to 6.50 m is parked in transport position at the rear behind the cab or on a parking frame. This configuration provides a balanced weight distribution on the vehicle axles.



FME 500 transport

FME 600



Technical data

Reach up to 7.2 m right-/left-hand side

Lateral shift 1300 mm

Special features Balanced weight distribution in transport position
Obstacles easily passed
Implement width in transport position only 2,10 m

Description

The lateral shift of the FME 600 makes the arm highly flexible in every field of activity. Thanks to the special arm geometry it is easy to work with, has considerable reach and passes obstacles with ease.



FME 600 transport

MKM 700



Technical data

Reach Front mounted mower 6.7 m (7.2 m*)
Verge mower 3.00 m

Lateral shift 850 mm (1300 mm*)

Special features Proportional control with CAN-Bus
Automatic parking / extending of the verge mower
Automatic touch control and arm relief system Mähtronic

Description

The optimal geometry of the boom system makes it easy for the MKM 700 to avoid small obstacles such as traffic signs up to 2.9 m and enables quick mowing work.



MKM 700 transport

* after dismantling of the verge mower

Rear-mounted mowing equipment

GZA 850 S



Technical data

Mounting centre position

Swivel range 200° (95° rear/105° front)

Reach 7,80 m (Teleskop 8,80 m/9,30 m)
right-hand working position

Transport position over fender to the rear

Description

Working in the immediate proximity of obstacles is now possible with the integrated swivel arm. Transport position to the rear allows advanced driver's view on the street while driving.



GZA 850 S transport

GA 600



Technical data

Mounting rear position
above power-lift unit

Reach 5,80 m (telescope 6,80 m)
left- and right-hand working position

Transport position over cabin to the front

Description

With the mounting positioned above the power-lift unit it is possible to work around exceedingly high obstacles.



GA 600 transport

GHA 700 SM



Technical data

Mounting rear position, mounting plate
instead of power-lift unit

Reach 6,40 m left-/right-hand work
- with basic arm telescope 7,20 m
- with basic arm and bending-arm
telescope 8,20 m

Lateral shift 800 mm from the center of vehicle

Transport position over cabin to the front

Description

With the special concept of this rear-mounted power arm it is possible for the Mower to work similar to a central-mounted unit with a highly improved driver's view onto the mowing head.



GHA 700 SM transport

Reach measures from the center of the vehicle (including mowing head width of 1,20 m)

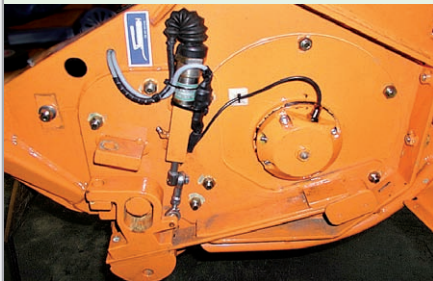




MLM 200 / MRM 300

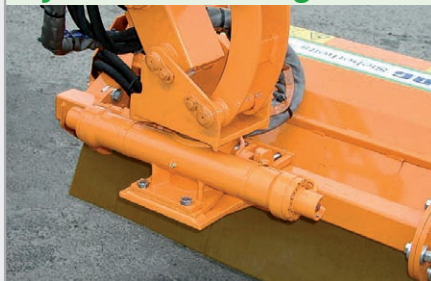
Optional features for MULAG-Mowers

Mähtronic



Automatic, computer-assisted contact pressure setting of the mowing head. Sensors transmit the ground configuration to the computer which adjusts the boom functions independently.

Hydraulic Rotating Device



The rotational range is 230°, continuously controlled via the control unit. The rotational range can be adapted during operation.

Multifunction Joystick



The form of this joystick is perfectly adapted to the human hand. Up to 4 proportional functions can be controlled at one level.

Rear-mounted Hydraulics



To drive front-mounted power arms with the rear PTO-shaft a supporting frame for the hydraulic drive has to be built onto the rear power-lift unit. One or more hydraulic pumps are driven by a cardan shaft. The supporting frame serves also as a support for mounting the hydraulic tank, optional counterweights and the parking frame for power arms with transport position above the cabin.

Front-mounting plate



For the mechanical support of front-mounted power arms a front-mounting plate (size 3) is being attached to the tractor front. This front-mounting plate is installed onto the front power-lift unit with the lower links removed. Thus an easy accessible and robust base for the front-sided mounting of the power arm is being accomplished.

Axle support

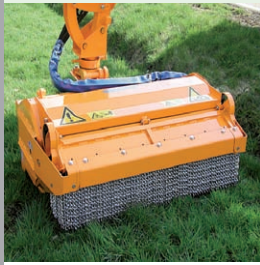


To reinforce the vehicle against torsional moments alongside the vehicle axis it is necessary to install a hydraulic cylinder with disengageable support to the vehicle front axles. The hydraulic supply of the support is realized using the existing vehicle hydraulics. Depending on the application of the power arm the support on the vehicle axle can be single- or double-sided.

Working attachments for operation all year round

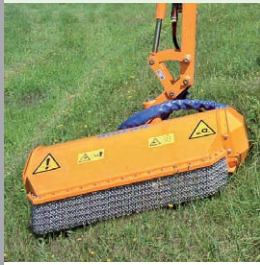
Mowing heads

Universal Cutting Head UMK 1200



mowing of grass and scrub
Working width 1200 mm
Cutting thickness up to 40 mm
Weight approx. 350 kg

Flail Head MK1200/MK1600



mowing of grass and scrub
Working width 1200 mm/1600 mm
Cutting thickness 20 mm/20 mm
Weight approx. 350 kg/370 kg

Brushwood Shredding RotorHead BRK1200



shredding of shrubbery/bushes
Working width 1200 mm
Cutting thickness up to 60 mm
Weight approx. 350 kg

Clearing attachments

Verge Cleaning Device BRG 1000



cleaning of overgrown verges
Working width 1000 mm
Cutting thickness up to 80 mm
Weight approx. 415 kg

Rotary Ditch Cleaner GRG 650



clearing of roadside ditches
Milling wheel diameter 650 mm
Wheel speed 500 rpm
Weight approx. 245 kg

Attachments for hedging and siding up

Coarse Cutting Bar GMB 1600/GMB 2000



cutting of branches, twigs etc.
Working width 1600 mm/2000 mm
Cutting thickness 40 mm / 40 mm
Weight approx. 120 kg/130 kg

Branch/Hedge Cutter AWS 1500/AWS 2200



cutting of branches, twigs etc.
Working width 1500 mm/2200 mm
Cutting thickness 80 mm/80 mm
Weight approx. 210 kg/210 kg

Free Zone Cutter FSG 2000



clearing of walkways/road sides
Working width 2000 mm
Cutting thickness up to 150 mm
Weight approx. 235 kg

Earth Auger

Earth Auger EBG



drilling of holes (for posts etc.)
Auger length 900 mm
Diameter 250 mm
Weight approx. 110 kg

Brush systems

Weed Brush WKB 750



removing of grass and weeds
Working width 750 mm
Brush speed 300 rpm
Weight approx. 170 kg

Brush systems

Gutter / Surface Brush RB 650



removing of grass and weeds
Working width 650 mm
Brush speed 300 rpm
Weight approx. 150 kg

Double Washing Brush DWB



washing of posts, road signs etc.
Working width 800 mm
Brush diameter 600 mm
Weight approx. 200 kg

Embankment maintenance

Rotary Rake KH 2500



turning/rowing up cut grass
Working width 2500 mm
Drive hydraulic
Weight approx. 225 kg

Double Blade Cutter DSW 1900



grass/shrub removal on slopes
Working width 1900 mm
Cutting thickness up to 10 mm
Weight approx. 130 kg

Weed Bucket MKB 2450



clearing of ditch vegetation
Working width 2450 mm
Strokes <= 600 rpm
Weight approx. 295 kg

Distributor

Manufacturer

MULAG

MULAG Fahrzeugwerk
Heinz Wössner GmbH u. Co. KG
Gewerbestraße 8
77728 Oppenau
Germany

Phone +49-(0)7804-913-0
Fax +49-(0)7804-913-163
E-mail info@mulag.de
Web www.mulag.de

